



KONICA MINOLTA

MINIMISE ALL. MAXIMISE ALL.



bizhub 754e/654e



Giving Shape to Ideas

Superior productivity and document innovations that give your business the leading edge



Monochrome productivity and quality at the highest level

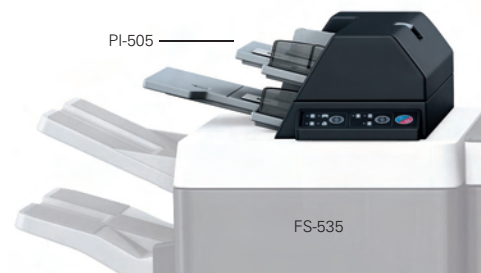
Maximum productivity in minimal time

The bizhub 754e/654e offer high-speed scanning of 90 opm for simplex documents and 180 opm for duplex documents. And outputs of 75 ppm for the 754e and 65 ppm for the 654e allow quick processing of booklets and aggregated copying and printing. The 754e/654e also achieve a longer consumable life and continuously maintain high image quality over the long term. Furthermore, they reduce operating times and running costs to realise lower total cost of ownership (TCO).



Post inserter for a variety of outputs

Install Post Inserter PI-505 to Finisher FS-535 for inserting colour output paper as covers or dividers for creating booklets. The Post Inserter's control panel can also be manually set for post-processing of printed documents.



Post-processing jobs include:

Stapling (corner, two-point), Centre-folding*¹, tri-folding*¹, hole punching*¹

*¹ With options installed

Extensive paper feeding options and high paper capacity

The main unit's standard paper trays hold up to 3,750 sheets. Combined with the optional paper feeding units, the bizhub 754e/654e offer a maximum paper capacity of 6,750 sheets. To maximise productivity even further, paper and toner can be replenished on the fly. They can also accommodate large SRA3 paper (320 x 450 mm).

Max. paper capacity: 6,750 sheets (80 g/m²)
with optional Large Capacity Unit LU-301 installed

Supported paper: 52 to 256 g/m² (standard trays)
52 to 256 g/m² (large capacity unit)
52 to 300 g/m² (multiple bypass tray)



Maximum output for 3,000 sheets

Tray 2 for Finishers FS-534 and FS-535 can be automatically adjusted according to the amount of discharged paper, providing a maximum capacity for 3,000 A4 sheets or 1,500 B4 and A3 sheets.

* A4 paper capacity with the saddle stitcher installed:
FS-534: 2,000 sheets, FS-535: 2,500 sheets

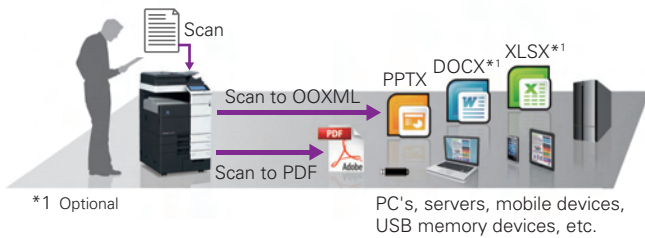




Advanced solutions to maximise document use and security

Digitise hardcopies for more effective use of documents

The bizhub 754e/654e are standard equipped with a high performance colour scanner. Paper documents can be scanned and converted to various PDF files or frequently used Office OpenXML format files for a wider range of uses. In addition, OCR processing converts hardcopy text into files with digitised text.



Optimal device placement for better TCO and environmental performance

Konica Minolta's Optimised Print Services (OPS) promotes greater business efficiency through optimal device placement and reduced TCO. Optimally placing more eco-conscious devices also reduces power costs.



Prevent information leaks with flexible user authentication

Protect valuable information without sacrificing convenience with a variety of authentication systems including the server-free MFP authentication, IC card authentication using employee IDs and the sure-safe biometric finger vein authentication.



ISO 15408 EAL3 (IEEE 2600.1 Compliant) *2

The bizhub 754e/654e achieve an unparalleled level of security by complying with IEEE 2600.1 international standard for MFP and printer information security.

*2 Under evaluation



Cloud and mobile connectivity for a new work style

Leverage cloud services with bizhub Connector

bizhub Connector apps*1 can be registered to the main unit to access cloud services*2 and SharePoint 2007/2010 corporate servers directly from the control panel.

New

bizhub Connector
Available in three types of apps

- **bizhub Connector S-1** for Microsoft SharePoint
- **bizhub Connector G-1** for Google Apps
- **bizhub Connector E-1** Works with Evernote

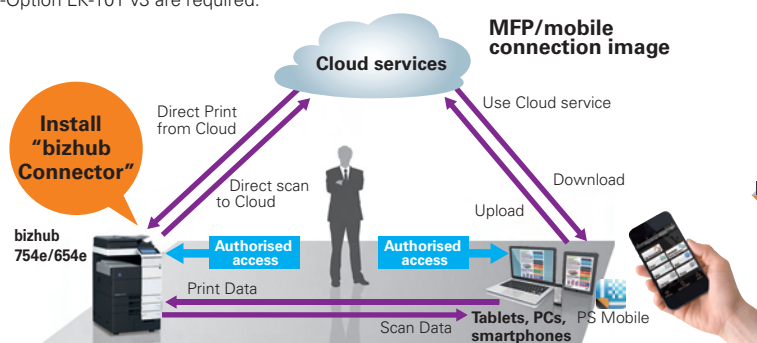
*1 Optional Upgrade Kit UK-204 and i-Option LK-101 v3 are required.

*2 Google Drive, Gmail, Evernote

PageScope Mobile for intuitive mobile device operation

Print documents and images directly from and receive scanned data with mobile devices such as smartphones or tablets with the PageScope Mobile for iPhone/iPad and for Android apps (free-of-charge). Cloud services*3 can also be accessed for sharing information and for a wider range of other uses.

*3 Usable cloud services as of 1 September 2013 are as follows: Google Drive, DropBox and Evernote.



PageScope Mobile for iPhone/iPad



PageScope Mobile for Android

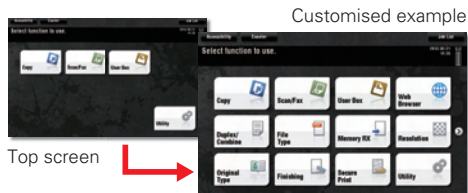




Smart & simple Comfortable operations for everyone

Customisable user-friendly control panel

The control panel's shortcut and function keys can be customised to limit the use of functions and simplify operations. Up to 23 shortcut keys can be set in the main menu for quick access to frequently used functions. Function key displays can also be changed according to department or user.



Top screen

Customised example

User interface designed with the user in mind

The bizhub 754e/654e adopt the INFO-Palette design smart user interface, providing the same user experience through seamless operation even from PCs, tablets and smartphones.

The user interface further enhances ease of use with intuitive mobile device-like tap, flick & pinch operation.



INFO-Palette



Flick the Copy screen

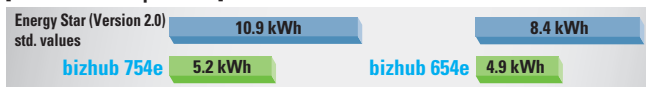


Cost-effective and earth-conscious in almost every way

Low power consumption even during use

The bizhub 754e/654e easily clear the new Energy Star standard TEC values. The thoroughly energy-saving design also reduces TCO.

[TEC value comparisons]



* Values for 220-240 V

* TEC values applied to the International Energy Star Program Version 2.0

Made from more environmentally considerate materials

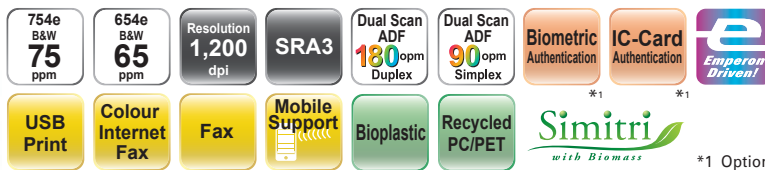
The bizhub 754e/654e promote corporate environmental conservation activities with a low environmental impact design. Recycled materials*1 are effectively employed for 27.4 percent of the main unit's surface area, including recycled PC/PET and recycled PC/ABS in 23 locations and biomass plastic.

*1 Includes a mixture of PCR (Post Consumer Recycled) materials recovered and recycled from consumers.



Model shown is 754e with options.

bizhub 754e/654e



*1 Optional

For more information please visit the bizhub Web site at

http://www.biz.konicaminolta.com/bw/754e_654e/index.html

Product appearance, configuration and/or specifications are subject to change without notice. This product is not available for some countries or regions.



KONICA MINOLTA, the KONICA MINOLTA logo and symbol mark, "Giving Shape to Ideas", bizhub, bizhub PRO, bizhub PRESS, magicolor, PagePro, PageScope, Simitri, Simitri HD, Simitri HD+, Simitri with Biomass, Emperon, S.E.A.D., S.E.A.D.II, Printgroove and Konica Minolta Optimised Print Services and their respective logos are registered trademarks or trademarks of KONICA MINOLTA, INC. Evernote is a registered trademark or trademark of Evernote Corporation.

Google is a trademark or registered trademark of Google Inc. in the U.S. and other countries.

SharePoint is a registered trademark or trademark of Microsoft Corporation in the U.S. and other countries.

All other brands and product names are registered trademarks or trademarks of their respective companies or organisations.

Ecology & Environment

KONICA MINOLTA products are designed with the environment in mind.

- Energy Star
- Eco-friendly Toners
- RoHS Compliance
- Production at ISO Certified Factories
- WEEE Compliance



From consulting, system design, to operations, Konica Minolta offers total support to optimise your office output environment.

<http://www.biz.konicaminolta.com/services/ops>

Requirements for safe use

- Please read and follow the instruction manual to ensure safe operation.
- Only operate using appropriate power supply and voltage.
- Connecting the earth wire to an inappropriate place may cause explosion or electric shock. Please connect accordingly (Taiwan and the Philippines only).



KONICA MINOLTA, INC.

2-7-2 Marunouchi Chiyoda-ku, Tokyo, Japan
<http://www.biz.konicaminolta.com>

9251-3219-11 Printed in Japan